



Brewster Conservation Trust

www.brewsterconservationtrust.org

Fall 2020

Every Walk Is a Special Reward

A short walk through the beautiful woods of our Brewster is the perfect way to shut out the noise of the wider world for a short time. Listening to nothing but the sound of the crunch under foot and the rustle of an unseen bird or chipmunk or what was that?

Heartbeat slows, blood pressure lowers even if for a few moments.

Every walk is a new experience and a special reward.

Joe

All through the spring, summer and fall the bike trails have been crowded and kayaks filled the ponds and near shore. Bathers, mostly following social distancing, enjoyed the beaches. But now is the time for taking walks.



We invite you to share stories and photos of your favorites.

BCT has been busy making trails in every part of the town.

For directions and descriptions of trails in the town, go to: brewsterconservationtrust.org

Here are a few of our favorite trail sites.

NO BOTTOM POND

Drive down Route 137 through Brewster and look east where the power lines cross the road and you will catch a glimpse of No Bottom Pond. BCT acquired access to the pond in 2016, but other land owners, Orenda Wildlife Land Trust, the Town of Brewster, and Ocean Edge Resort, have made this a 55-acre community project.

Once you hike down the steep path to reach the pond, there is a scenic half mile loop trail with plenty of views to admire and a chance to ponder how incredible it is that

one of the deepest kettle ponds on Cape Cod is a gift of a glacier 10,000 years ago.

No Bottom Pond is a great place to take a short walk, bird watch, cast a line, discover Cape Cod geology or simply sit and listen to the sounds of nature.

Great trail! Had a wonderful walk around the Pond. Thanks for the info.

Jane

continued on page 2

— OUR MISSION —

"To preserve open space, natural resources, and the rural character of Brewster, and to promote a conservation ethic."

QUIVETT MARSH VISTA

“EEEW! It’s a snake!” “It’s only a garter snake,” her grandmother reassured her. So the five-year old burrowed into the bushes with grandma’s phone to try for a photo of the elusive snake. The two were on their way to a picnic at a table hidden at a confluence of mowed paths at Quivett Marsh Vista. A joint project of the Town of Brewster, the Commonwealth of Massachusetts, and BCT, the winding paths with glimpses of the marsh and Bay beyond are lined with blackberries in the late summer but are inviting for a short, peaceful walk at any season.

In 2014 the BCT land stewards cleared invasive plants to allow native plants to fill the space. Of course, invasives are designed to invade and continued vigilance is required. Volunteers on Tuesday or Thursday are welcome to help encourage Nature and also to keep her in check.

Thanks to Pat & Giovanna



FISHING ROCK



This iconic site, just up from where Lower Mill Pond spills into to Stony Brook, has long been known as the Fishing Rock. A short path leads from the mill site to the rock and a view over the pond. Or you can stand at the access and think of the deep history of the place. BCT bought the site in 2010 and the only maintenance needed is for the short access trail.

A walk by the herring run and old mill to the pond. A quick jump over the run and a brief climb to the rock. You can see over the pond with its snapping turtles (a legacy of the late 19th century turtle soup craze) and imagine fishermen from Native Americans, early settlers, WWII soldiers to today’s anglers sitting peacefully hoping for dinner.

Dirkie

SALT MARSH

A grassy trail leads east from the parking lot at Crosby Landing. Parallel to the beach, it ends near Namskaket Creek at the Orleans boundary. The marsh is mostly owned by the Commonwealth, but four acres were bought by BCT in 2010. It is over this marsh that the Crosby Fly Boys show their skill with custom and colorful model planes in early morning.

Salt marshes are nurseries for fish and shellfish. They prevent erosion and protect against the rising waters of climate change, but this is a use earlier Cape Codders would never have expected.

John Gavin, Bill Scott, Bill Woollen, Skip Caplan





President's Message

In the Spring edition of our newsletter, I talked about Brewster's natural resources and specifically our numerous trails as places to restore our souls amid the fear and uncertainty of the Covid19 pandemic. Indeed, we observed over the summer and into Fall that more people than ever have taken advantage of the trails, enjoying the peace and healthy lifestyle they offer. This activity has reinforced the importance of walking trails as part of our stewardship. And with that we've seen more expressions of support for what we do. The silver lining in the cloud that remains over us is that it has reinforced our mission. I'm proud to say that it's been a great year in land protection, stewardship, and outreach.

BCT BY THE NUMBERS

In 2020

- 46.37 acres protected
- 9 parcels protected
- 5 parcels in the drinking water supply area

Since our founding in 1983

- 1,417 acres protected
- 44 parcels in the drinking water supply areas
- 33 parcels on pond fronts
- 8.6 miles of public trails

Our land protection achievements were record breaking: 9 parcels covering more than 46 acres. With our focus on sensitive lands, the majority of the parcels protected water supply areas, pond frontage, and wetlands. We were able to be aggressive because of our land acquisition funding reserves, but which now need replenishing. All of your donations go 100% to land acquisition so please be as generous as you can. BCT land acquisition means more open space, more protection for water resources, and more trails to explore.

Hal Minis, *BCT President*

BAKER'S POND

Walking in the quiet solitude of the Baker's Pond trails, surrounded by the deep forest and gently rolling hills, is a cleansing experience for the mind and spirit.

Don

The 90-acres of conservation land around Baker's Pond was quietly assembled over decades in both Orleans and Brewster.



BCT contributed three parcels totaling 33.5 acres that were acquired between 2010 to 2013 adding to the larger town property. Beginning in January, 2014, and continuing until the trail finally opened in 2017, BCT volunteers worked tirelessly with the Brewster and Orleans Departments of Natural Resources and AmeriCorps to blaze new trails, to redesign existing trails to avoid private property and to make the most of established cart paths and foot trails.

With the support of the Orleans Conservation Trust, the Orleans and Brewster Departments of Natural Resources and Conservation Commissions, the result is a 2-mile loop and two shorter trails that offer views of Baker's Pond and



a vernal pool. There is wealth of majestic white pine, mockernut hickory and mitten-leaved sassafras and a walk through a cathedral-like beech grove. In autumn the knee-high huckleberries turn deep wine-red on Huckleberry Hill, at 120' the highest hill in Brewster.

The Baker's Pond trail, one of my favorites, affords an unusual experience in Brewster – it has ups and downs – it is long, about 2.5 miles and longer if you connect with the adjacent Nickerson Park trails, and has varied landscape.

Bonnie

INNOVATE TO CONNECT

Pre-pandemic BCT had a series of seminars, guided walks, field days with school children, and Brewster Conservation Day, scheduled and ready to go.

Instead, creativity and Zoom took over. Coffee hours on-line replaced work days. Proposed instructional walks became virtual where we learned by Zoom about tick safety with entomologist Larry Dapsis and about Bio-Char to reduce forest buildup and create fertilizer with Bob Wells. We held workshops on edible plants with Russ Cohen, and Russell Norton showed us how to prune trees and bushes. There were bird and bud identification contests.

The virtual Annual Meeting included a spectacular show by Steve Koppel of his photographs of Cape Cod Bay. You can visit the entire half-hour annual meeting at:

brewsterconservationtrust.org/annual-meeting-2020.

Steve's presentation starts at about 30 minutes.

Education of young people and their appreciation of the natural world is an important part of BCT's mission. In place of school field trips and Brewster Conservation Day, we offered a StoryWalk along the nature trail behind the Eddy School where Recreation Director Mike Gradone showed children the world of pond creatures through the book *Salamander Sky*. The Brewster Ladies' Library and the Brewster Book Store shared this book as well as *Bea's Bees*, the StoryWalk at the Eddy Sisters Trail by the Community Garden.

brewsterconservationtrust.org/storywalk-at-vernal-pool-trail/



For well known reasons we could not travel to Cape Cod this summer and therefore dearly miss our friends and the natural landscapes and water bodies (ponds and sea views). When watching the recording of your 2020 annual meeting, I was impressed by the accomplishments of the Conservation Trust and almost became homesick in view of the wonderful pictures of the Brewster Flats. Hopefully we can return next year.

Bernard



Hi, I want to share with you the fact that my daughter and I took a walk around the community gardens this week and the fields were absolutely alive with pollinators especially in the back corner on the spearmint. There were some pollinator species that we didn't recognize. We looked them up when we got home. It was incredible to witness and made our day!

I am a beekeeper and a gardener and I appreciate all that you do for the town.

Laura

More on pollinators on page 8

INNOVATE TO CONNECT

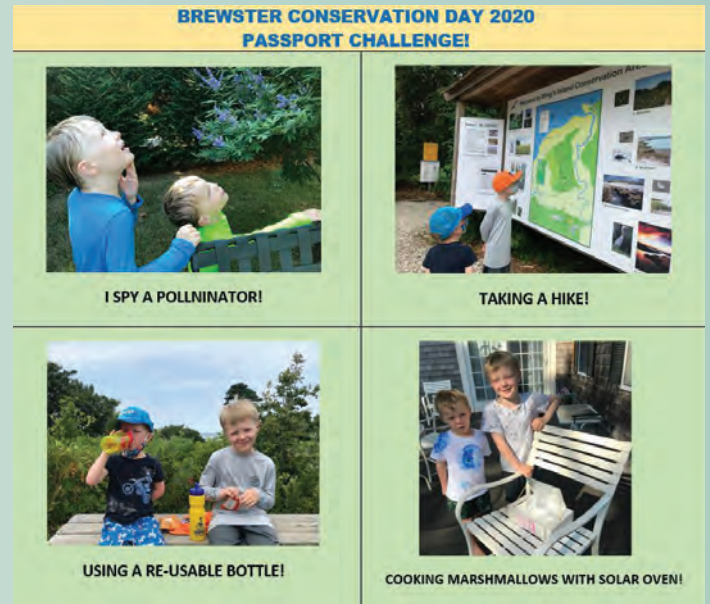
I just went and walked the Bea's Bees walk with my husband, and it was lovely! I was so impressed by it. I hadn't been over by the Community Garden in some time. It's so beautiful this time of year!

Gabrielle

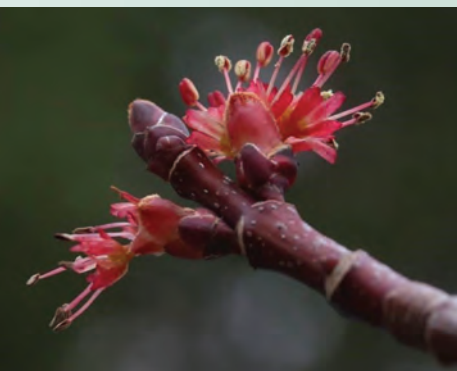


Without **Brewster Conservation Day**, we created a virtual event for real children to do their own research on nature and the environment.

Brewster Conservation Day is a celebration of the many organizations that support conservation, ecology and appreciation of the natural world. Children delight in its activities, creative opportunities and the ice cream that is the reward for completing a “passport” showing the booths they have visited.



Without this special day, we instead designed a “passport” for individual accomplishments with a prize at the end of a backpack filled with goodies designed for future study and appreciation.



There is always a way, even if it is not a straight line. *There is a way* to teach skills and bring information. *There is a way* to encourage participation and show sources of recreation. *There is a way* to engage and excite children. *There is a way* to bring inside outside and a way to bring us all closer to the earth, to nature and to the things that matter most to ourselves, our family and our community.

SHARE US WITH YOUR FRIENDS! Follow us on Facebook and Instagram.

Check out our website to stay connected all year long! **brewsterconservationtrust.org**

TOWN MEETING AGAIN PROTECTS WELLFIELDS AND HABITAT

At the September 2020 Town Meeting, Brewster citizens once again proved that we are the Conservation Town by voting to purchase nearly 10.5 acres, one of the last remaining large lots along the western edge of the Freeman's Way wellfields. This parcel adds to the large wellfield protected area that runs along Route 6 and Freeman's Way and out to Route 137.

Although the purchase was acquired primarily for water protection, Brewster showed it also cares about land that is important as habitat for rare plant and animal species. The project demonstrates that many groups can work together for the common good as funds are provided by the Community Preservation Fund, the Water Department, and the Brewster Conservation Trust. BCT had donated \$30,000 toward the purchase and will hold a Conservation Restriction.



THANKS FOR ALL YOU DO



CONSERVATIONIST OF THE YEAR

Don Schall has been a conservation leader on Cape Cod since he became Director of the Cape Cod Museum of Natural History in 1972. During his tenure there he brought the life of the beaches and woods to the Brewster Elementary School, and he continues to bring his delight in the natural world to children of the Eddy School today with BCT excursions to the Hay Woods and Windmill Meadows. A member and former president of the Cape Cod Botany Club, he shares his expertise with BCT staff and volunteers in assessing potential new acquisitions and assisting with management of BCT properties.

BCT is proud to present to Donald Schall the Conservationist of the Year award, a tribute that reads: ***Being at the forefront of conservation in Brewster through his sustained support of BCT, role as director of CCMNH, and service on the Brewster Conservation Commission.***

SCHOLARSHIP RECIPIENT

Kieran Norton, Nauset Regional High School senior, is the 2020 recipient of the scholarship given jointly by the Brewster Conservation Trust and the Brewster Garden Club. Kieran has been "enthralled" by the ocean as a surfer and as a fisherman for lobsters and shellfish. His concern for by-catch by mid-water trawlers, depletion of fish stocks, and erosion has influenced his plan to pursue an environmental engineering degree at Dartmouth.



Congratulations, Kieran! We hope to hear great things from you in the future.



VOLUNTEER OF THE YEAR

Volunteers play an important role with the Brewster Conservation Trust, but each year we recognize one volunteer who has gone above and beyond. This year we recognize **Andy Perkins** for his years of contributions to BCT.

Andy grew up in Brewster in the summer, became a part-time resident in 1988, and retired here full time in 2013. Shortly thereafter Andy started volunteering with BCT and has been a valuable asset ever since. From working on trail projects to monitoring properties, and from organizing workdays to being a liaison in the community, Andy has done it all. Andy also played a key role in BCT's Service Enterprise certification last year. His dedication to his role with BCT is unparalleled. He even insisted on sending out workday notifications while he was on vacation. Thank you, Andy for all you do for BCT and the Brewster Community!

The Brewster Conservation Trust is pleased to recognize our local Conservation Business Partners for their cash and in-kind contributions. We urge our supporters to patronize these businesses. For more information about our Business Partnership Program, contact Amy Henderson at amy@brewsterconservationtrust.org.

CONSERVATION HEROES

Brewster By The Sea Inn
Bryan P. Daley Construction
Fran Schofield, Realtor,
Robert Paul Properties
Ocean Edge Resort and Golf Club

CONSERVATION PARTNERS

ArborTech
Brewster Ace Hardware
Brewster Bookstore
Cobie's Restaurant
Crocker Nurseries
Kate's Seafood

What will your legacy be? Do you appreciate the Town's rural character, the trails, the high quality drinking water? Then consider including Brewster Conservation Trust in your estate plan. Gifts of any size will help BCT carry on its mission and ensure those same valued assets for the next generation.



LEAVE A LEGACY

Making a bequest to BCT in your Will can have many advantages – you can reduce the taxable amount of your estate and avoid paying taxes and capital gains. Gifts can be made from your IRA that count toward your minimum distribution and are tax free. BCT can accept gifts of cash or securities. Consult your professional advisor for further information and guidance.

MEMORIALS & BEQUESTS

Contributions to BCT honor the memory of a loved one; give a donation to the Brewster Conservation Trust “in lieu of flowers”. Send donations to: 36 Red Top Road, Brewster, MA 02631. For guidance on planning a bequest or gift, contact Amy Henderson at: amy@brewsterconservationtrust.org.



In Memory of

G. F. “Jeff” Alter

Foster Lott
Katherine Alter

Dorothy J. Breckenridge

R. Warren Breckenridge

Dana Condit

Peter R. & Eleanor R. Johnson

Bernard Cooper

L. Joe & Alice Perdue

Bill & Agnes Dowling

Susan & Richard Stewart

Diane L. Gately

James H. Gately
The Gately Family

Raymond Girard, Sr.

Patricia A. Girard

Margarette Harper

JoAnne R. Ackman

John & Kristi Hay

Donald G. Schall

Carol Hoffman

J. Philip & Anne M. Wise
Catherine W. & William H. Fitz

E. Beverly Johnson

Deborah M. Brodeur
Pauline Johnson, Nephew & Family
Mary E. & Paul A. Nourse
Herbert M. & Jean S. Varnum

Carroll Johnson

Jane E. Johnson

Herb Lach

Beth Finch
Nancy Shoemaker

Alliette Laughran

James R. Jr. & Mary Anne McGrath

Bob Lindgren

Ian & Ruth Crowe

Jim Lord

Maryann O. Lord

Jim Maples

Peter R. & Eleanor R. Johnson
Hal Minis
Roger O'Day
Peter Soule

Kevin P. Martin, Sr.

Kevin P. & Claire M. Martin

Marguerite McGirr

Anne C. & John J. Crowley

Mary Mooney

Brian C. Mooney
Lisa McDonald

Janice & Lindsay Northam

Lindsay P. Northam, Jr.

Phil O'Connel

Richard J. & Elizabeth Cronin

Carol Parisi

Robert K. Ax
Chris Kenney
Pat Eggers

Ellen St. Sure

Olga L. Sherry

Karen Tortora

Patrick & Vivian Tortora

Charles vander Horst

Andrew L. & Sharon T. Mandell

Ruth Walters

Katherine E. & George M. Williams

Charles & Elinore Wood

William S. & Patricia M. Wood

In Honor of

Brewster Conservation Trust

Patricia F. O'Brien

Raymond Pena

Donna & Tom Pena

Vicki Plaut – Happy Birthday

Jeffrey W. & Ellen R. Plaut

Benjamin Popler-Adams,

Amelia Popler, & Jack Popler

Kenneth & Lois Popler

Mark Robinson

Barbara L. & Peter A. Schaible

Don Schall

Sarah Schall

Don Segal – 70th Birthday

Dayva Segal

Sue Watson

William Silva
Anna Crawford

Brewster Conservation Trust

508-694-6720

BCT@brewsterconservationtrust.org

www.brewsterconservationtrust.org

BOARD OF TRUSTEES

Hal Minis, *President*Bonnie Newman, *Vice President*Debra Johnson, *Secretary*Peter Soule, *Treasurer*

Joe Biernat

Amy Chesnut

Beth Finch

Peter Johnson

Martin Kamarck

Donald Keeran

John Lamb

Steve McKenna

Roger V. O'Day

Charlie Sumner

Rosemary Van Antwerp

Executive Director: Amy Henderson*Land Stewardship Coordinator:* Jon Bruce*Administrative & Outreach Coordinator:*

Dorria Marsh

AmeriCorp Member: Mary Doucette*Conservation Advisor:* Mark Robinson*Newsletter Contributors*

Sue Carr, Beth Finch, Amy Henderson,

Dorria Marsh, Jim Mills, Hal Minis,

Bonnie Newman, Nancy Shoemaker

**Brewster Conservation Trust**

36 Red Top Road, Brewster, MA 02631

NON-PROFIT ORG.

U.S. Postage

PAID

Permit No. 17

Orleans, MA

All About Pollinators

Do you like to eat? Then you should support pollinators since most of our fruits, vegetables, nuts, oils and even fibers depend on pollinators. Who are these friends? Bees, but also wasps, beetles, butterflies, moths, hummingbirds and even bats. These creatures are threatened by climate change, pesticides, loss of habitat, and declining populations of native flowering plants.

Small changes can make a big difference: decrease the size of your lawn; minimize the use of pesticides and herbicides; and plant a beautiful native pollinator garden.



PLANTS FOR YOUR POLLINATOR GARDEN

- **Native columbine** - *Aquilegia Canadensis*; naturalizes along part shade woodland gardens and attracts hummingbirds and butterflies. Spring bloom with red/yellow flowers.
- **Mayapple** - *Podophyllum peltatum*; moist rich soil in partial/full shade. White/rose-colored flowers April/May.
- **Smooth swamp-milkweed** - *Asclepias incarnata*; Attracts bumblebees, butterflies, and other insects; host plant for the monarch butterfly; blooms summer/fall.
- **New England/Purple Dome** - Asters; full/part sun with well-drained soil.
- **Coneflower** - *Echinacea purpurea*; full/part sun; large showy flowers with a great seed head that birds love to eat.
- **Pycnanthemum muticum** - a nectar plant, blooms late season for butterflies and predatory wasps.

Thanks to Jennifer Floyd at Crocker Nurseries in Brewster for the suggestions.